



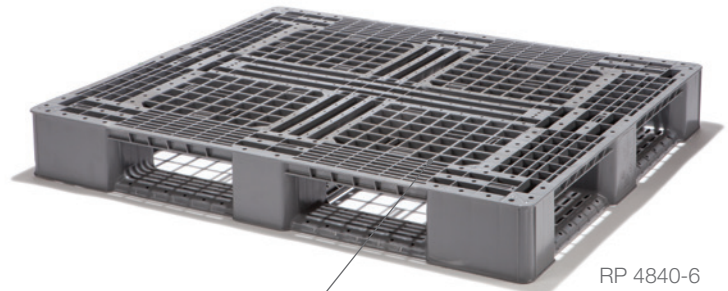
# RP 4840-6

Monoflo's high-pressure injection molded pallet systems are engineered to be more durable yet lighter, saving you money and lasting longer than competitive products. Our versatile line of pallets will perform brilliantly in any specific application.

The Monoflo RP 4840-6 is a heavy duty one-piece injection molded pallet designed around the GMA 48" x 40" footprint. The one-piece design is ideal for hygienic applications in the food, beverage, and pharmaceutical industries. This pallet's unique design is engineered for automated systems and offers an industry-leading strength to weight ratio.

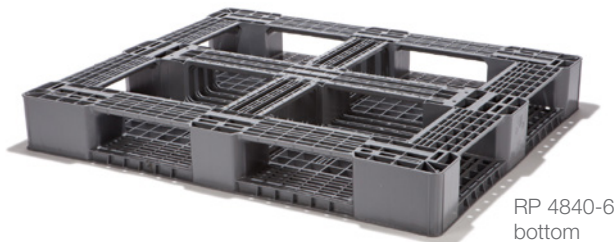
It also features:

- > Standard footprint of 48" x 40" for GMA applications
- > Hygienic, one piece, flow through design
- > Product offered in PP material for heavier racking applications or PE for more economical applications
- > Manufactured using FDA approved materials and a USDA approved design
- > Sustainable solution—100% recyclable with no metal



RP 4840-6

Designed for easy cleaning



RP 4840-6 bottom

## RP 4840-6 Specifications

Model	Entry	Material	Outside Dimensions (inches)			Pallet Weight	Static Load (lbs)	Dynamic Load (lbs)	Edge Rack Load (lbs)	Stack Qty	Trailer Qty 53'
			L	W	H						
RP 4840-6 I	4-Way	PE	48.0	40.0	6.0	42.0	30,000	4,000	1,400	17	510
RP 4840-6 II	4-Way	PP	48.0	40.0	6.0	40.0	30,000	4,000	2,100	17	510

Static and Dynamic Load ratings are affected by type and distribution of loads, contact your Monoflo Sales Rep to discuss your application.



Monoflo International  
Call 540-771-3077  
882 Baker Lane, Winchester, VA 22603

[miworldwide.com](http://miworldwide.com)



defining what comes next.

Monoflo International is America's premier manufacturer of superior quality injection molded plastic products. Known for expert engineering, system integration expertise and unparalleled customer service, Monoflo's innovative container and pallet systems have been used in food and beverage, durable manufacturing, distribution, and bakery for over 40 years.