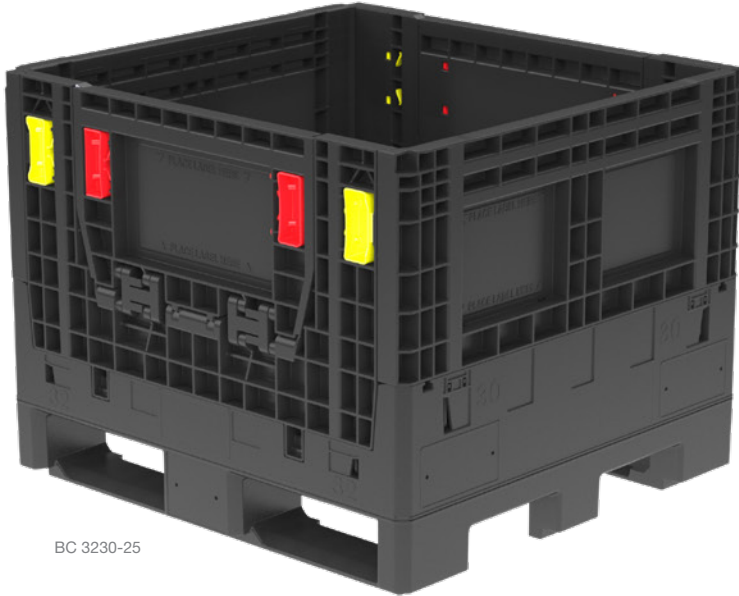


**NEW FROM MONOFLO!**

**NEXT GEN BC 3230**

## No other bulk container compares.

After more than a decade of customer application testing, we've made improvements and our G2 (Second Generation) BC 3230 bulk containers are better than ever!



BC 3230-25



BC 3230-34, side wall access door open



BC 3230-34, collapsed

### Features:

- 32" x 30" AIAG footprint
- Available in 25" & 34" heights
- 100% compatible with existing products
- Larger side access doors
- More durable two-piece welded base
- Optional drain holes
- More versatile labelling areas for RFID, barcode or QR code options
- Bigger area for customer/company logo
- New textured areas for ASTM standard peel & stick marking options
- Available optional lid

Customers use them for: Automotive components, bearings, parts (metal, plastic & rubber), resins, powder, industrial equipment, hardware & tools, & more...

Specs	BC3230-25	BC3230-34
Outside Dimensions	32"L x 30"W x 25"H	32"L x 30"W x 34"H
Inside Dimensions	29.5"L x 27.5"W x 19.3"H	29.5"L x 27.5"W x 28.3"H
To Fill Line	18.5"	27.5"
Height Collapsed	12.6"	12.6"
Weight	50.0 lbs	62.0 lbs
Volume	8.7 cubic ft	12.9 cubic ft
Trailer Qty Opened	240	180
Trailer Qty Collapsed	540	540

Monoflo's high-pressure, injection-molded bulk containers are second to none. With millions of containers in service, the Monoflo bulk container is the proven choice.

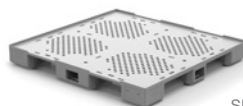
Our continued investment in the best equipment, automation and high-speed robotics guarantees quality, consistency and on-time delivery. Monoflo bulk containers are engineered for strength, 100% recyclable, repairable and always competitively priced.

### Other Monoflo products:



Bulk Containers

BC 4845-34



Pallet Systems

SP 4845-06



Straight Wall Containers

NSO 2415-09

Contact your salesperson for more information.  
**miworldwide.com**

Or call 540-771-3077

**MONOFLO**  
INTERNATIONAL

defining what comes next.