



**AutoStore Bins made by Monoflo** are designed and approved for use in the modular and stackable AutoStore system. Bins are shipped with Monoflo’s Reusable Packaging System (RPS). Depending on the size of AutoStore Bins you order, this system includes returnable, recyclable components that ensure product is protected and efficiently cubed out.

**Designed for More Efficient Shipping**

Monoflo’s RPS packs more Bins in a single truckload, decreasing the overall costs of shipment and lowering carbon emissions. The RPS is designed to be reused and keeps Bins safe and undamaged during transit, ensuring smooth induction upon arrival at their destination.

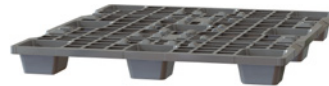
There are three returnable components in our Reusable Packaging System (RPS):

**1**



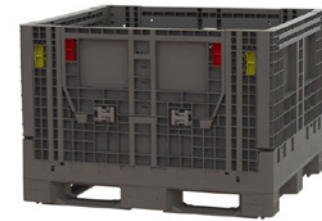
**Spacers** (Used only with the 330 height AutoStore Bins) – fit along the top edge of the Bins. Must be removed and returned in the bulk container provided.

**2**



**Nestable Pallet** – Bins will be shipped on a reusable pallet. Nest the empty pallets after unloading Bins and return to Monoflo with the rest of the RPS components.

**3**



**Collapsible Bulk Container** – Provided to return Spacers and Interlocks.



Interlocks are recyclable and can be returned with Spacers.

**Step-by-Step How to Use the RPS** The RPS is designed to be reused and your help is required to ensure complete return of components is executed thoroughly.

The illustration to the left shows where components are found and how they are used. The Spacers should be placed in the provided bulk container then shipped back to Monoflo along with the nestable pallets. Interlocks can also be sent back in the supplied bulk container. Shipping labels are provided for ease of use.

Spacers are included with the 330 height AutoStore Bins and must be returned to Monoflo.

Product	Bin Height	Bins per Pallet	Interlocks per Pallet	Spacers per Pallet	Pallets per 53' Trailer
AS12522	220	55	200	N/A	26
AS12523	330	50	60	30	26
AS15346	425	30	100	N/A	26

**ALL RPS COMPONENTS MUST BE RETURNED TO MONOFLO**