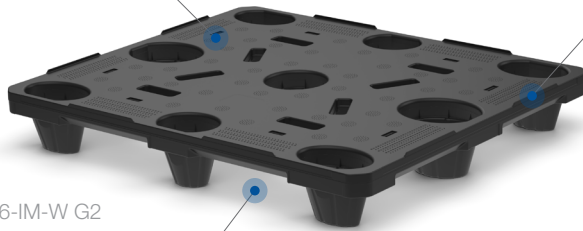


# Nestable & Rackable Pallets

Textured top deck for reduced slippage

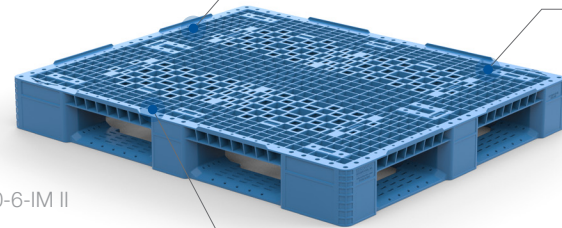


NP 4840-6-IM-W G2

Four-way fork and hand truck entry for quick loading and unloading

Two-piece welded design offers strength and durability with low tare weight

Manufactured using FDA approved materials and a USDA approved design

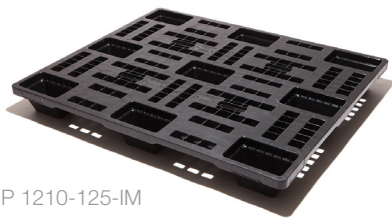


RP 4840-6-IM II

12 Top deck grommets for reduced slippage

Hygienic, one-piece flow-through design for easy cleaning

## Distribution Pallets Specifications:



NP 1210-125-IM

Model	Entry	Material	Outside Dimensions (inches)			Pallet Weight	Static Load (lbs)	Dynamic Load (lbs)	Edge Rack Load (lbs)	Stack Qty	Trailer Qty 53'
			L	W	H						
<b>Nestable Pallets</b>											
NP 4840-6-IM-W G2	4-Way	PE	48.0	40.0	6.5	25.0	10,000	3,000	N/A	42	1,260
NP 4840-6-IM	4-Way	PE	48.0	40.0	5.8	22.5	10,000	1,800	N/A	43	1,290
NP 3042-6-IM	4-Way	PE	29.0	42.0	5.9	20.0	10,000	2,000	N/A	39	1,755
NP 1210-125-IM	4-Way	PE	47.5	39.4	4.9	22.0	10,000	1,800	N/A	25 (2 stacks)	1,500

Static and Dynamic Load maximum ratings are affected by type and distribution of load.

## Rackable Pallets

RP 4840-6-IM I	4-Way	PE	48.0	40.0	6.0	46.5	30,000	4,000	1,900	18	540
RP 4840-6-IM II	4-Way	PP	48.0	40.0	6.0	47.1	30,000	4,000	2,200	18	540
RP 3737-6-IM	4-Way	PE	37.0	37.0	6.0	37.6	30,000	3,800	N/A	17	544

Edge Rack Load ratings are affected by type and width of support for pallet on the short side.