

**Foldable Container Specifications:**



KD 2415-07

Model	Outside Dimensions (inches)			Inside Dimensions (inches)			Stack Height (inches)	Folded Height (inches)	Weight (lbs)	Volume (cubic feet)	Trailer Qty 53'
	Top			Top							
	L	W	H	L	W	H					
KD 2415-07	23.9	15.0	7.4	22.2	13.6	7.4	6.6	2.8	5.3	1.2	6,240
KD 2415-09	23.9	15.0	8.5	22.2	13.6	9.5	8.5	3.5	6.1	1.6	4,992
KD 2415-11	23.9	15.0	10.9	22.2	13.6	10.9	9.9	3.5	6.5	1.8	4,992

KD containers are foldable from the long sides with latches and sidewalls connected to the base.

**Straightwall Container Specifications:**



NSO 1215-09

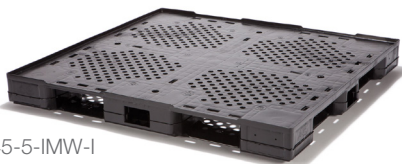


NSO 2415-14

Model	Outside Dimensions (inches)		Inside Dimensions (inches)		Total Height (inches)	Product Clearance (inches)		Weight (lbs.)		Volume (cubic feet)	Trailer (53') Qty*
	L	W	L	W		Flat	Cross Stack	Flat	Cross Stack		
NSO 1207-05 Only available in flat bottom	12.0	7.0	9.4	5.5	5.0	4.5	N/A	1.3	N/A	0.1	13,104
NSO 1215-04	12.0	15.0	9.4	13.0	4.0	3.4	2.9	1.6	1.8	0.2	8,112
NSO 1215-05	12.0	15.0	9.4	13.0	5.0	4.4	3.9	1.7	2.0	0.3	6,552
NSO 1215-07	12.0	15.0	9.5	13.1	7.5	6.9	6.4	2.3	2.6	0.5	4,056
NSO 1215-09	12.0	15.0	9.4	13.0	9.5	8.9	8.4	2.7	2.9	0.7	3,120
NSO 2415-05	24.0	15.0	21.5	13.1	5.0	4.4	3.9	2.9	3.4	0.7	3,120
NSO 2415-07	24.0	15.0	21.5	13.1	7.4	6.8	6.3	3.7	4.2	1.1	2,028
NSO 2415-09	24.0	15.0	21.5	13.1	9.5	8.9	8.4	4.3	4.8	1.4	1,560
NSO 2415-11	24.0	15.0	21.4	13.0	10.8	10.2	9.7	4.7	5.3	1.7	1,404
NSO 2415-14	24.0	15.0	21.5	13.1	14.5	13.9	13.4	5.7	6.3	2.3	936
NSO 2422-07	24.0	22.0	21.5	20.6	7.4	6.8	6.3	4.9	5.6	1.7	1,352
NSO 2422-09	24.0	22.0	21.5	20.6	9.5	8.9	8.4	5.6	6.3	2.1	1,040
NSO 2422-11	24.0	22.0	21.4	20.5	10.8	10.2	9.7	6.1	6.8	2.6	936
NSO 2422-14	24.0	22.0	21.4	20.5	14.5	13.9	13.4	7.4	8.0	3.5	624
NSO 4815-07	48.0	15.0	45.4	13.0	7.5	6.3	5.8	6.7	7.7	2.3	936
NSO 4815-11	48.0	15.0	45.4	13.0	10.8	9.6	9.1	8.3	9.4	3.5	624
1215-Lid	12.0	15.0	N/A	N/A	0.9	N/A	N/A	0.9	N/A	N/A	31,200
2415-Lid	24.0	15.0	N/A	N/A	0.9	N/A	N/A	1.5	N/A	N/A	13,780

\*Quantities when packed out as a unitized load with AIAQ pallet and top cap

**Manufacturing Pallet Specifications:**



SP 4845-5-IMW-I

Model	Entry	Outside Dimensions (inches)			Weight (lbs)	Static Load (lbs)	Dynamic Load (lbs)	Nest Ratio	Stack Qty	Trailer Qty 53'
		L	W	H						
SP 4845-5-IMW-I	4-Way	48.0	45.0	5.0	50.0	30,000	4,000	1:1	21	546
TC 4845-3-IM-II	N/A	48.0	45.0	2.6	16.0	N/A	N/A	N/A	50	1,170
NP 4845-6-IM	4-Way	48.0	45.0	6.0	34.6	30,000	4,000	2:1	35	910
NP 4845-6-SF-II	4-Way	48.0	45.8	5.8	36.0	30,000	2,000	1.96:1	35	910
TC 4845-3-IM-III	N/A	48.9	45.9	2.6	14.1	N/A	N/A	N/A	67	1,742

Call 540-771-3077  
miworldwide.com



Monoflo Manufacturing Pallets are not intended to be racked.  
Contact your Monoflo sales representative to discuss your application and maximum load ratings for all Monoflo products.